

TE RANGA

Gable Roof with Brick & Cedar Cladding

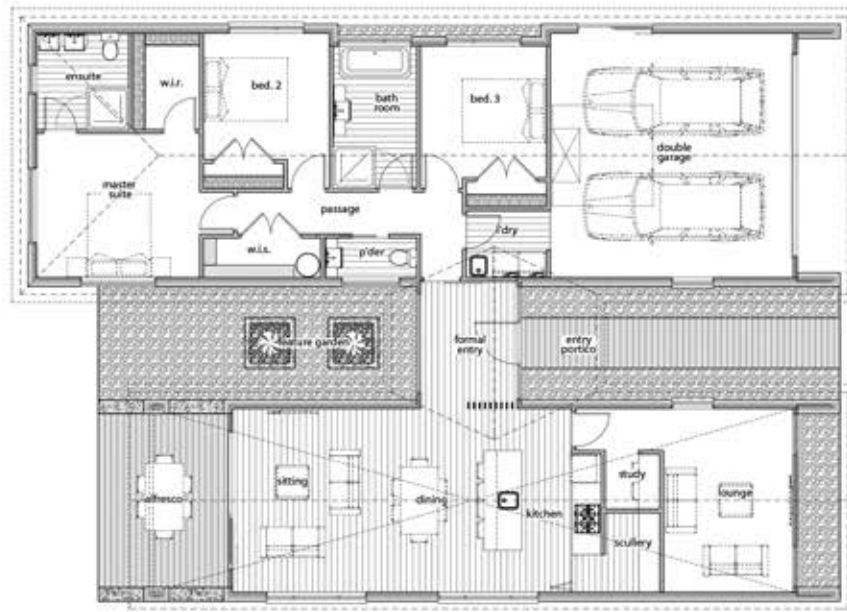


FLOOR SIZE

186 sqm

FROM

\$2350 / sqm



HOUSE ONLY PACKAGE INCLUDES:

- Permit - \$18500 allowance
- Colour Steel roof
- Bricks
- Cedar
- Double Glazed Aluminium Joinery inc garage
- Square Stop or 55mm Gib Cove
- Colour Steel Woodgrain powdercoated garage door
- 4kg solution dyed nylon Carpet
- Plank look vinyl
- Flat Hollowcore interior doors with lockwood hardware
- Englefield Showers 1m x 1m
- Greens Tapware
- Wall or floor vanity
- Kitchen/Scullery with Blum hardware - \$15000 allowance
- Stone benchtops (laminare in scullery & laundry)
- Built in wardrobe & cupboard systems - \$4500 allowance
- Electric hot water
- Panasonic Kitchen appliances - \$3100 allowance
- Feature lights in kitchen - \$300 allowance
- Tiled splashback, 200mm row in scullery & laundry - \$55 / sqm allowance
- Tiled behind freestanding bath up to window - \$55 / sqm allowance, 600 x 300mm
- Fujitsu Heat Pump - x1 living - 6 KW
- x2 double plugs in every room
- 10 year Master Build Guarantee
- Proform Homes warranty & information booklet
- ** Site excavation is excluded - quoted per section

SOME OPTIONAL EXTRAS:

- Decks | Side Gates | Fencing | Concrete driveway/patios | Landscaping | Colour feature walls
- Wallpaper feature walls | Extra feature lights | Floor to ceiling tiled walls | House Alarm
- Tinted glass | Insulate garage | Garage Carpet | Upgrade Flooring | Barn Door | Grooved Interior doors

NOTES:
